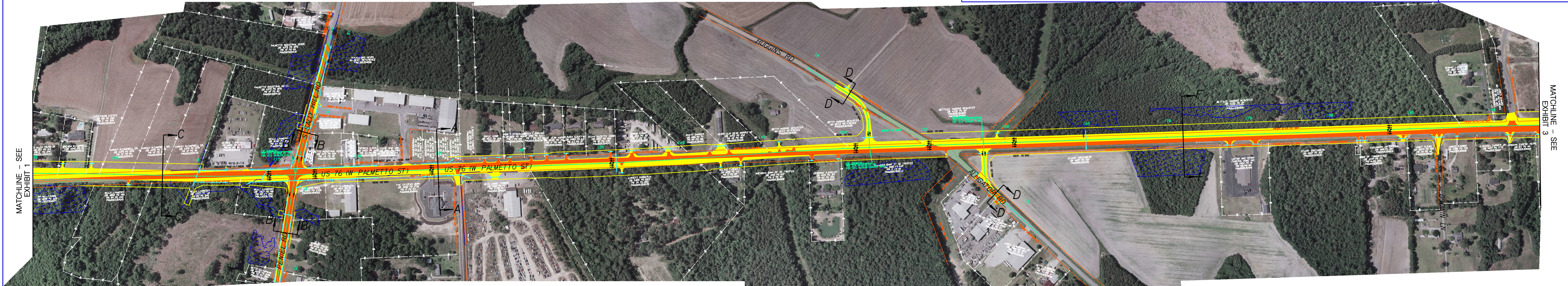


US 76 WIDENING
FLORENCE COUNTY

STV Incorporated



EXHIBIT 2

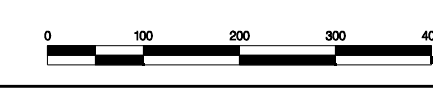
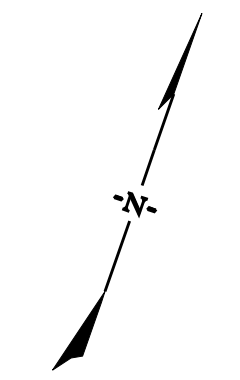


MATCHLINE - SEE EXHIBIT 1

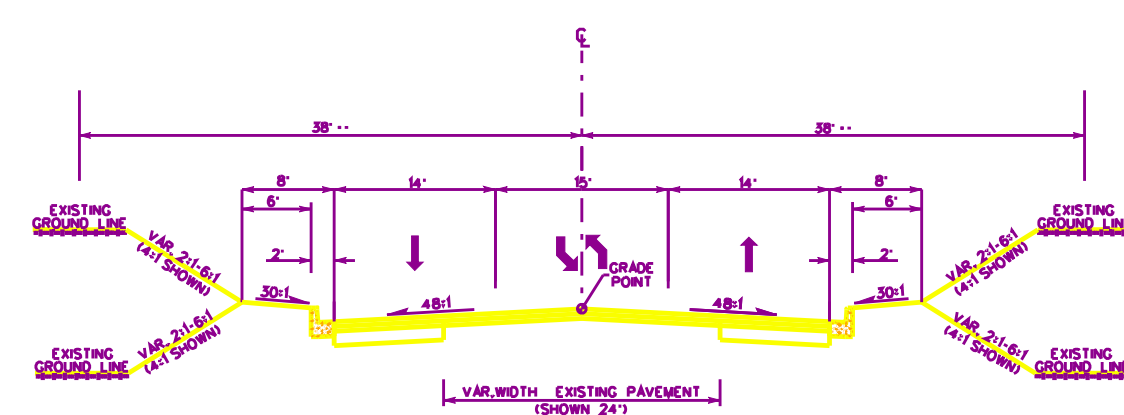
MATCHLINE - SEE EXHIBIT 3

LEGEND

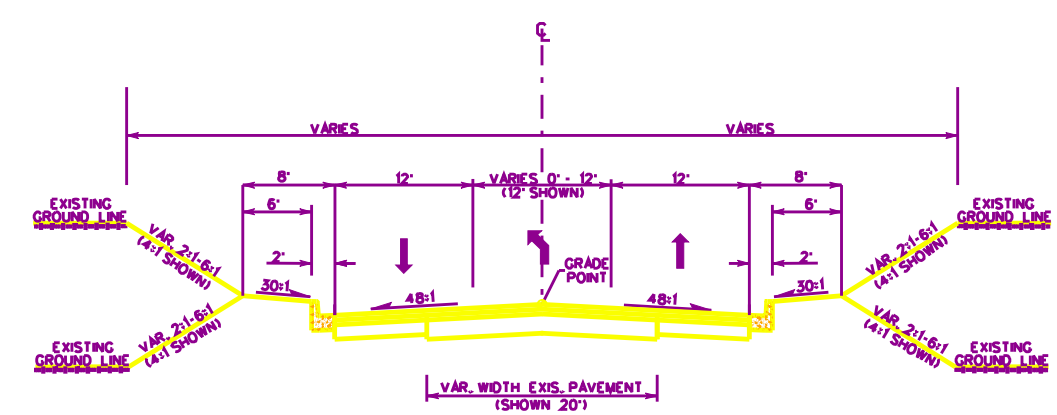
- █ PROPOSED ROADWAY
- █ PROPOSED BRIDGE
- █ EXISTING ROADWAY
- █ EXISTING BRIDGE
- ▨ PAVEMENT REMOVAL
- ▭ WETLANDS
- ▭ PROPOSED DRAINAGE
- ▭ PROPERTY LINE
- ▭ EXISTING R / W
- ▭ PROPOSED R / W



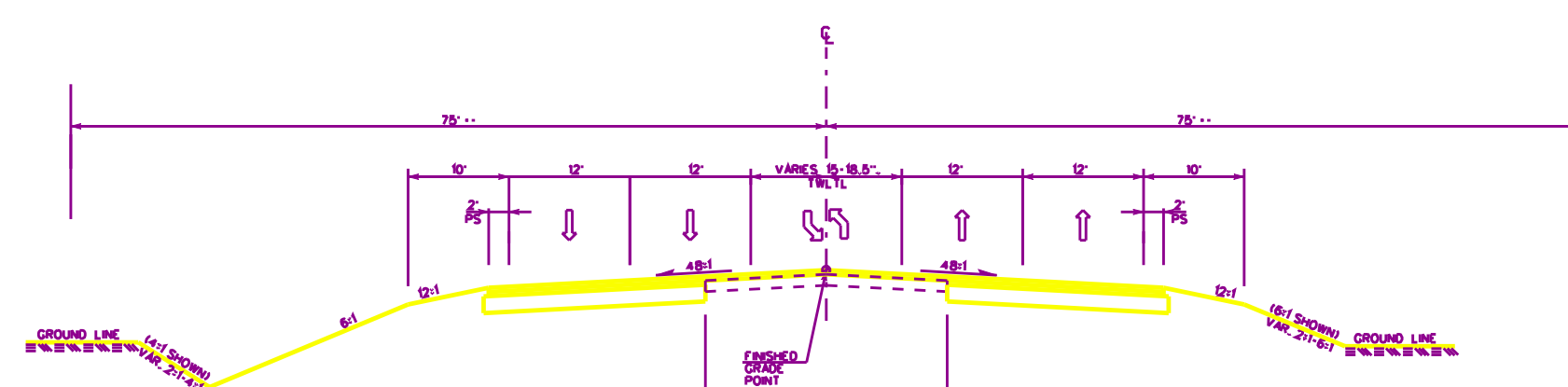
A-A - US 76 TYPICAL



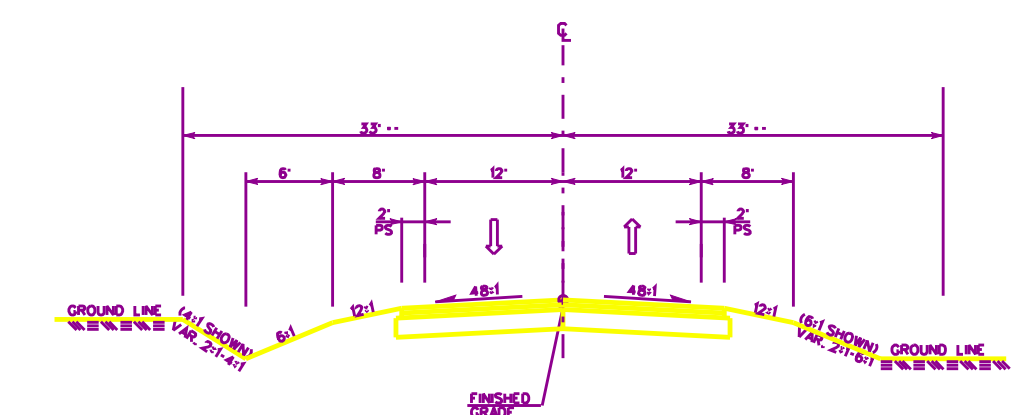
B-B - S-45 (SOUTH SALLEY HILL ROAD)
S-45 (PENIEL ROAD)
S-1371 (FOXWORTH STREET)



C-C - US 76 TYPICAL



D-D - S-18 (EAST MAIN STREET)
S-107 (ALLIGATOR ROAD)



F-F - US 76 TYPICAL

